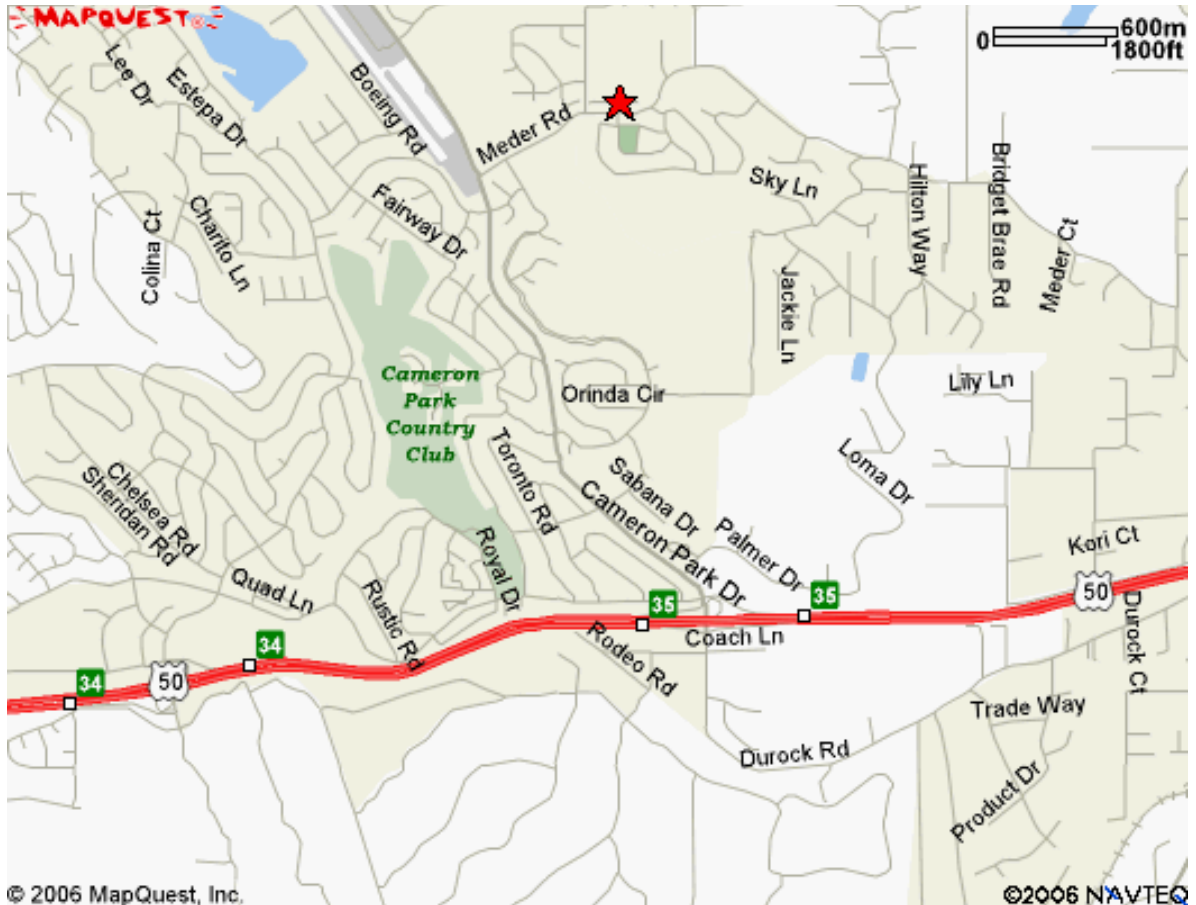


Location Map

3051 Cayente Way, Cameron Park, California



The subject property is located in the bedroom community of Cameron Park, on the western slope of El Dorado County. Retail services are within one mile. A private Country Club, and general aviation airport are within one half mile. The recreation areas of Folsom Lake and Lake Tahoe are an easy commute. Red Hawk Casino is 10 minutes up the freeway. This semi rural residential community serves both Folsom/Sacramento and Placerville work centers. House values range from \$475,000.00 to over \$1,200,000.00. Buildable lots are scarce and values range from \$90,000.00 to \$215,000.00